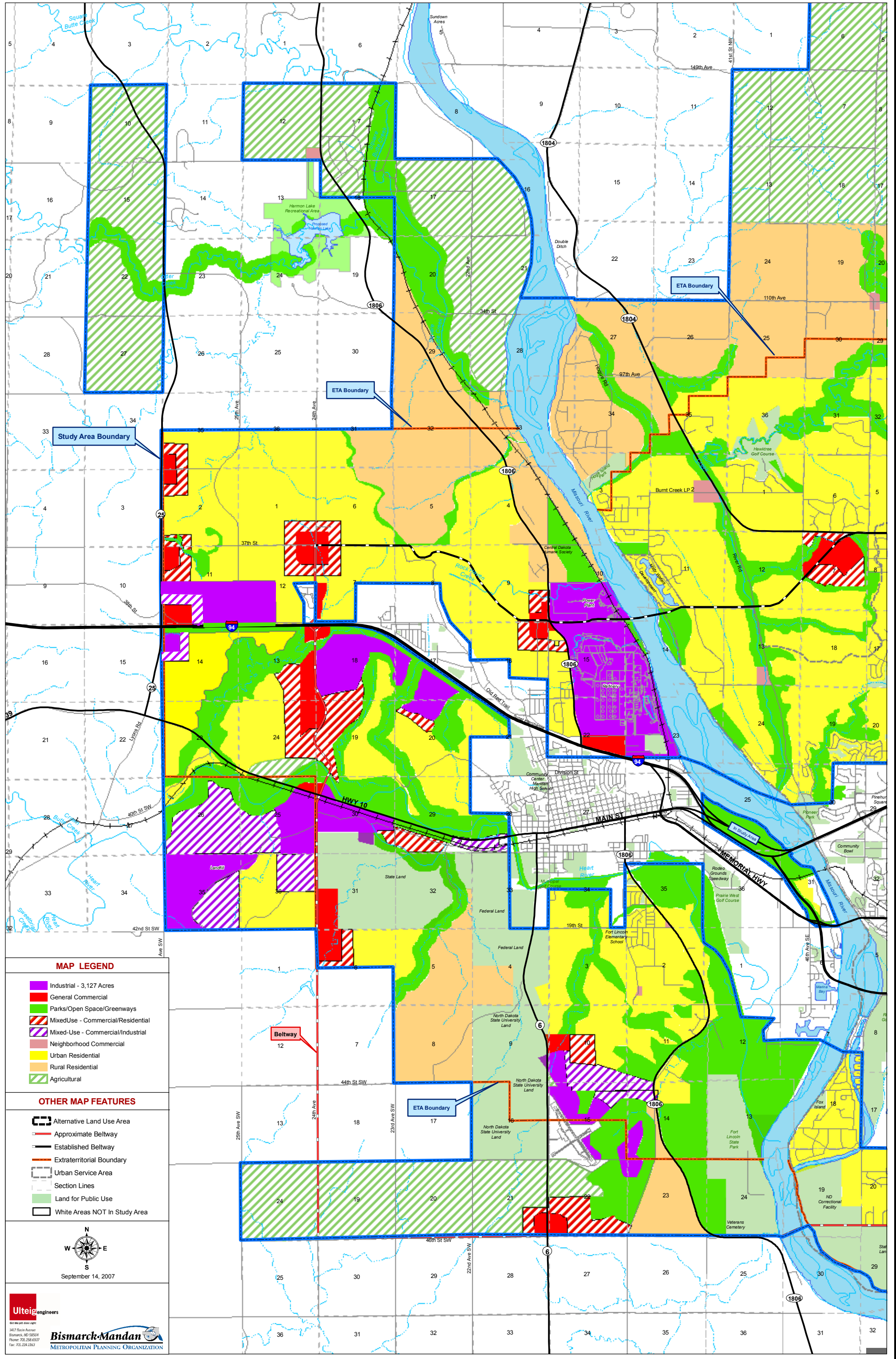


Mandan/Morton County Approved Plan

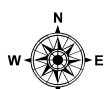


MAP LEGEND

- Industrial - 3,127 Acres
- General Commercial
- Parks/Open Space/Greenways
- Mixed-Use - Commercial/Residential
- Mixed-Use - Commercial/Industrial
- Neighborhood Commercial
- Urban Residential
- Rural Residential
- Agricultural

OTHER MAP FEATURES

- Alternative Land Use Area
- Approximate Beltway
- Established Beltway
- Extraterritorial Boundary
- Urban Service Area
- Section Lines
- Land for Public Use
- White Areas NOT In Study Area



September 14, 2007

Ulteigengineers

1412 South Avenue
Bismarck, ND 58504
Phone: 701.236.6307
Fax: 701.236.1363

Bismarck-Mandan
METROPOLITAN PLANNING ORGANIZATION